

07
09

montalto

FRAZER STREET
MALVERN





Montalto makes an instant impression

lavish yet statuesque

Lavish, yet statuesque, Montalto makes an instant impression. The timeless façade imbues the viewer with a sense of strength, quality and substance.

Step beyond Montalto's heavy oak door and the visitor is bathed in light. Ahead, a grand staircase leads the eye to a stunning barrel vaulted ceiling and its ornate skylight high above.

The grandeur of its proportions is matched only by the craftsmanship inherent in the smallest of details. From the dramatic wrought iron balustrades and classic marble bench tops, right down to the thick pure wool carpets, Montalto is appointed in impeccably good taste.



These aspects are drawn together under the discerning eye of a master architect in a quality floor plan designed for gracious living. Business or social guests received in the formal entry join their hosts in either the office or the luxurious sitting room, which flank the entrance. Beyond, expansive family areas at the rear of the residence and the tranquil sleeping zones upstairs retain their privacy.

Guests are treated to an exquisite experience at Montalto. Framed by towering columns and illuminated by the spectacular stairwell, the formal dining room is a setting to behold and enjoy. In winter, the open fireplace lends a warm ambience, while in summer, French doors open to a delightful manicured garden.

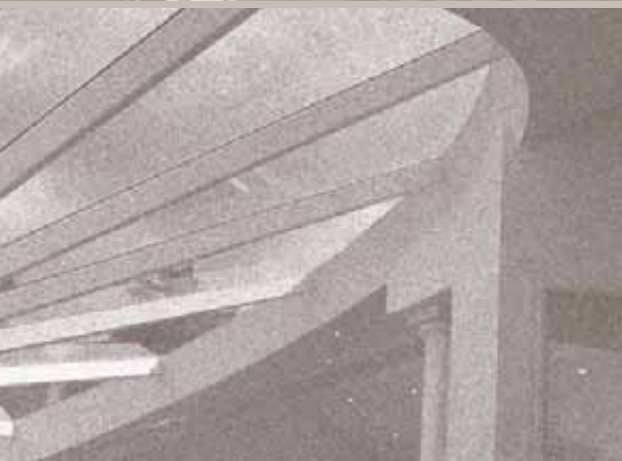
MOMENTS FROM HIGH STREET,
ARMADALE... ANTIQUES,
FASHION AND FURNISHINGS

MAGNIFICENT VISTAS
EXTEND TO MOUNT
DANDENONG AND BEYOND

THE CRAFTSMANSHIP IS
EVIDENT IN EVEN THE
SMALLEST DETAILS

design, detail & absolute decadence

montalto



ABUNDANT NATURAL LIGHT
REVEALS MONTALTO'S BEAUTY
AND GRAND PROPORTIONS

SET ON THE HIGH SIDE OF,
FRASER STREET, MONTALTO
FEATURES ELEVATED LIVING

IMPECCABLY APPOINTED
WITH PREMIUM QUALITY
FINISHES AND FITTINGS

There is more still for the consummate entertainer. Montalto's stylish and functional kitchen boasts beautiful marble, first class Miele appliances and a prodigious walk in pantry.

The family areas are no less agreeable than those reserved for entertaining. Accessed from the kitchen or via stairs from the ample four car garage below, they enchant the aesthete with elegant dimensions, soaring 3.15 metre ceilings and an unimpeded view to the fully landscaped courtyard.

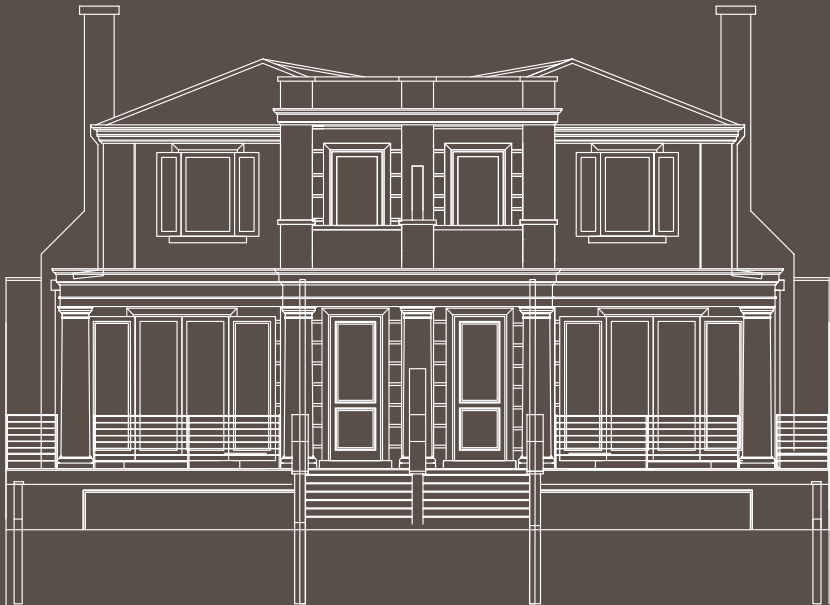
The outdoors are also a feature upstairs, with a vista from the master balcony that extends to the Dandenongs. Here, in each of Montalto's three bedrooms, the focus is emphatically comfort. Each boasts its own full ensuite, complete with marble surfaces, imported porcelain tiles and art deco fittings.

Design, detail and absolute decadence – life at Montalto is truly beautiful.

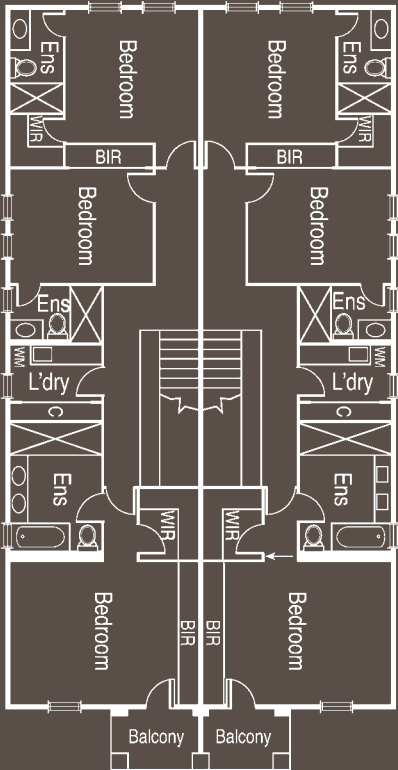


Montalto: specifications & plans

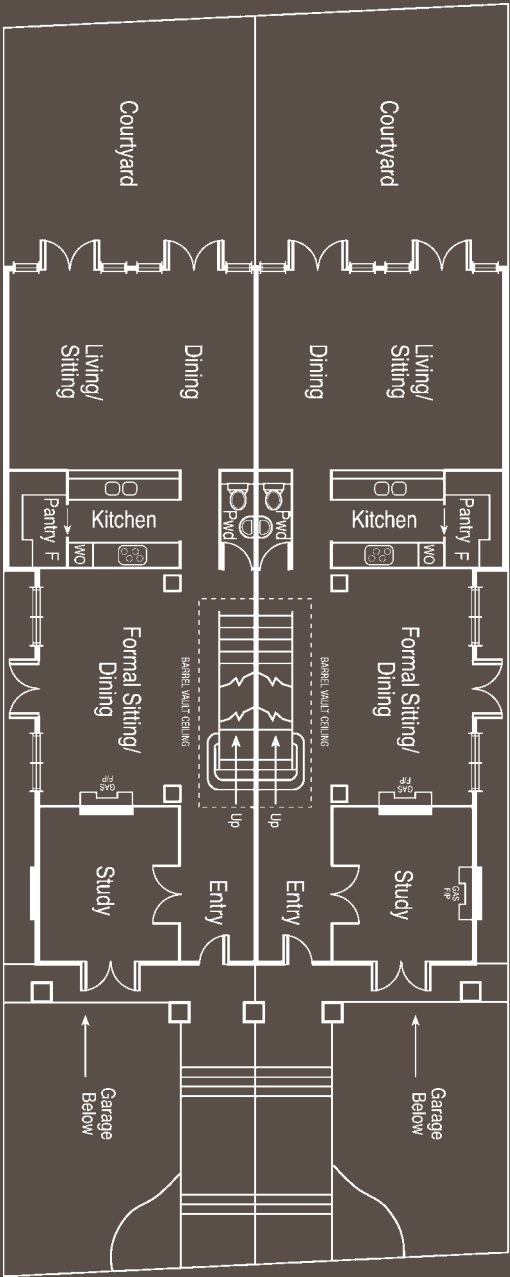
FRONT ELEVATION



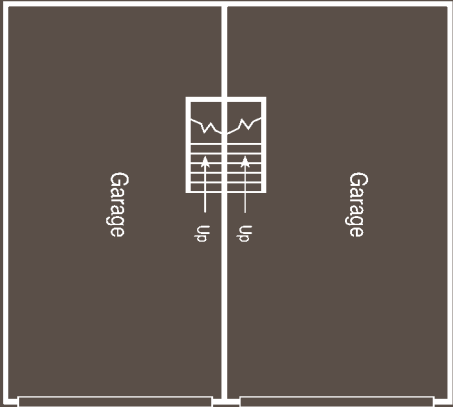
FIRST FLOOR



GROUND FLOOR



BASEMENT



wridgway | property group

GILBERT SIMONS

life at Montalto
is truly beautiful

SALES AGENTS

Mark Wridgway: 0419 510 777
markwridgway@benmac.com.au

Leonie Nolan: 0419 313 063
leonienolan@benmac.com.au



Bennison Mackinnon
& Associates Pty Ltd
1215 High Street, Armadale
Victoria Australia 3143
Telephone: 9864 5000
www.benmac.com.au

DEVELOPER

A tradition in prestige realty offers Wridgway property group a unique insight into the essence of quality development. Inspired architectural visions are carried through to innovative reality under the passionate guidance of the Wridgway group in partnership with clients and suppliers. The result is a residence of uncompromising standards and distinction.

ARCHITECT

Gilbert Simons specialises in luxury private residences and prestige development offering architectural solutions based on an eclectic approach and commitment to quality. Their holistic philosophy towards architecture embraces all aspects from landscape concept through to interior detailing. In collaboration with a team of experienced and dedicated building professionals, Gilbert Simons supervises each project from the initial concept to completion, so that clients may be confident every detail is given the utmost professional attention.



BUILDER

For more than 20 years, Craftmen Contractors have established an unparalleled reputation based on old fashioned values: honesty, reliability and craftsmanship.

The business does not advertise. Instead, its clients come on the recommendation of others, many of whom have had a number of homes constructed by Craftmen Contractors. Any promotion is limited to a simple list of projects that includes some of Victoria's most prestigious residences, from Somers to Brighton. New clients are encouraged to call any of Craftmen's property owners. An impeccable record speaks for itself.

Whilst every care had been taken in the preparation and presentation of this information, prospective purchaser should seek their own independent advice to satisfy themselves about all matters relating to the property before signing a contract of sale. In addition, plans and specifications are indicative only and may be subject to change.

BUY NOW OFF
THE PLAN, FOR
HUGE STAMP
DUTY SAVINGS
& CUSTOMISED
INTERIORS.

montalto

